

Elevation A



Floor 1



The following options are available but not selected : Gate at Sideyard, Plus Landscape Package, Ultra Landscape Package, Den w/ Doors, Triple Slider at Dining, Refrigerator at Kitchen, Slider at Master Bedroom, Gate at Utility Niche

Prices subject to change without notice. Please see your Community Representative with any questions. Sales: Shea Communities Marketing Company (NV #B.144675); Construction: SHALC GC, INC. (NV #NSCB0080574). Homes at Trilogy® are intended for occupancy by at least one person 55 years of age or older, with certain exceptions for younger persons as provided by law and the governing covenants, conditions and restrictions. This is not an offer of real estate for sale, or a solicitation of an offer to buy, to residents of any state or province in which registration and other legal requirements have not been fulfilled. Trademarks are property of their respective owners. Equal Housing Opportunity.



Trilogy Orlando - Plan 5182 - Imagine

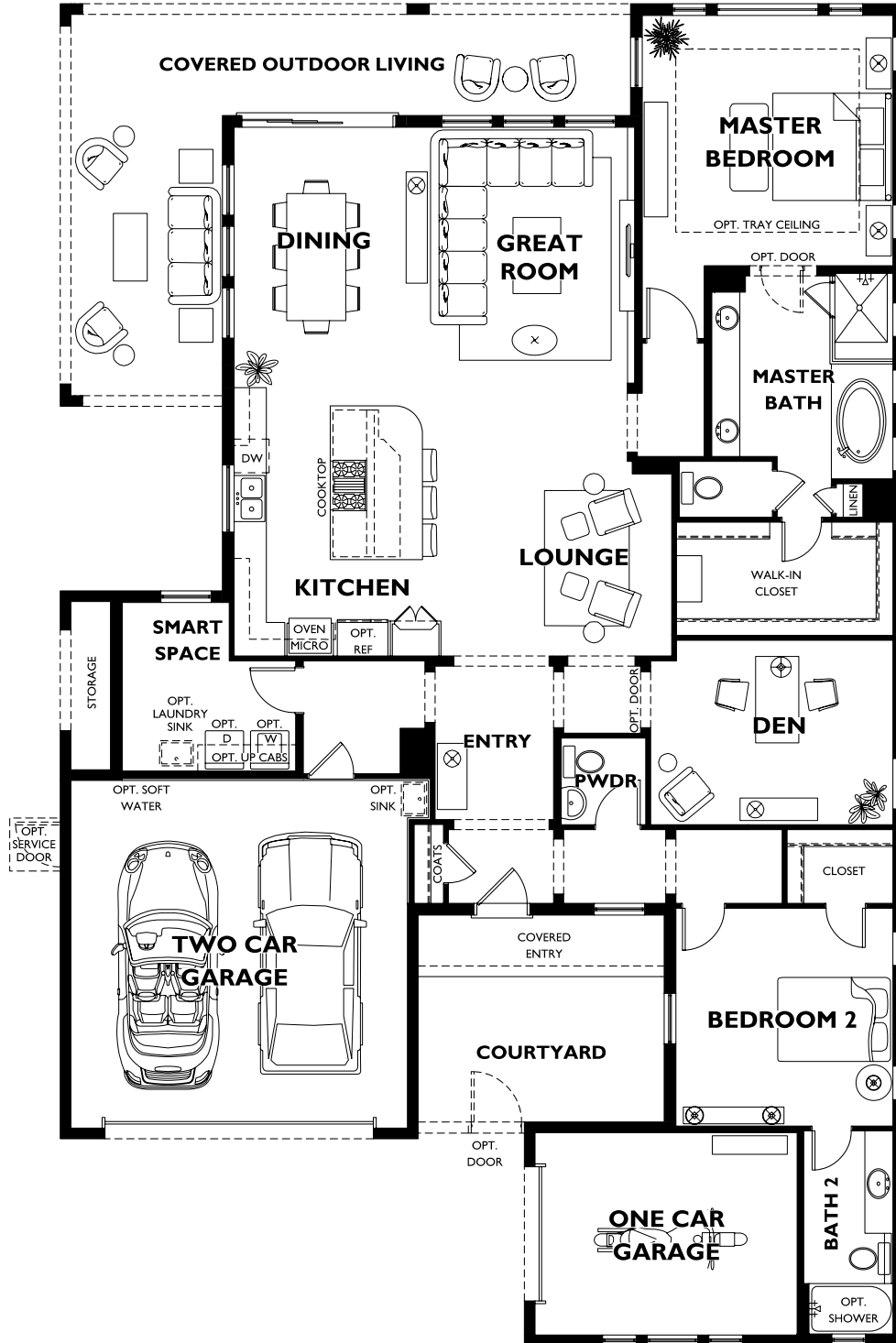
2-4 Bedrooms - 2-4 Bathrooms - 2 Car Garage - 2295 Sq. Ft.
100 Falling Acorn Ave, Groveland, FL 34736
(352) 240-7566

Elevation B



Prices subject to change without notice. Please see your Community Representative with any questions. Sales: Shea Communities Marketing Company (NV #B.144675); Construction: SHALC GC, INC. (NV #NSCB0080574). Homes at Trilogy® are intended for occupancy by at least one person 55 years of age or older, with certain exceptions for younger persons as provided by law and the governing covenants, conditions and restrictions. This is not an offer of real estate for sale, or a solicitation of an offer to buy, to residents of any state or province in which registration and other legal requirements have not been fulfilled. Trademarks are property of their respective owners. Equal Housing Opportunity.

Floor 1



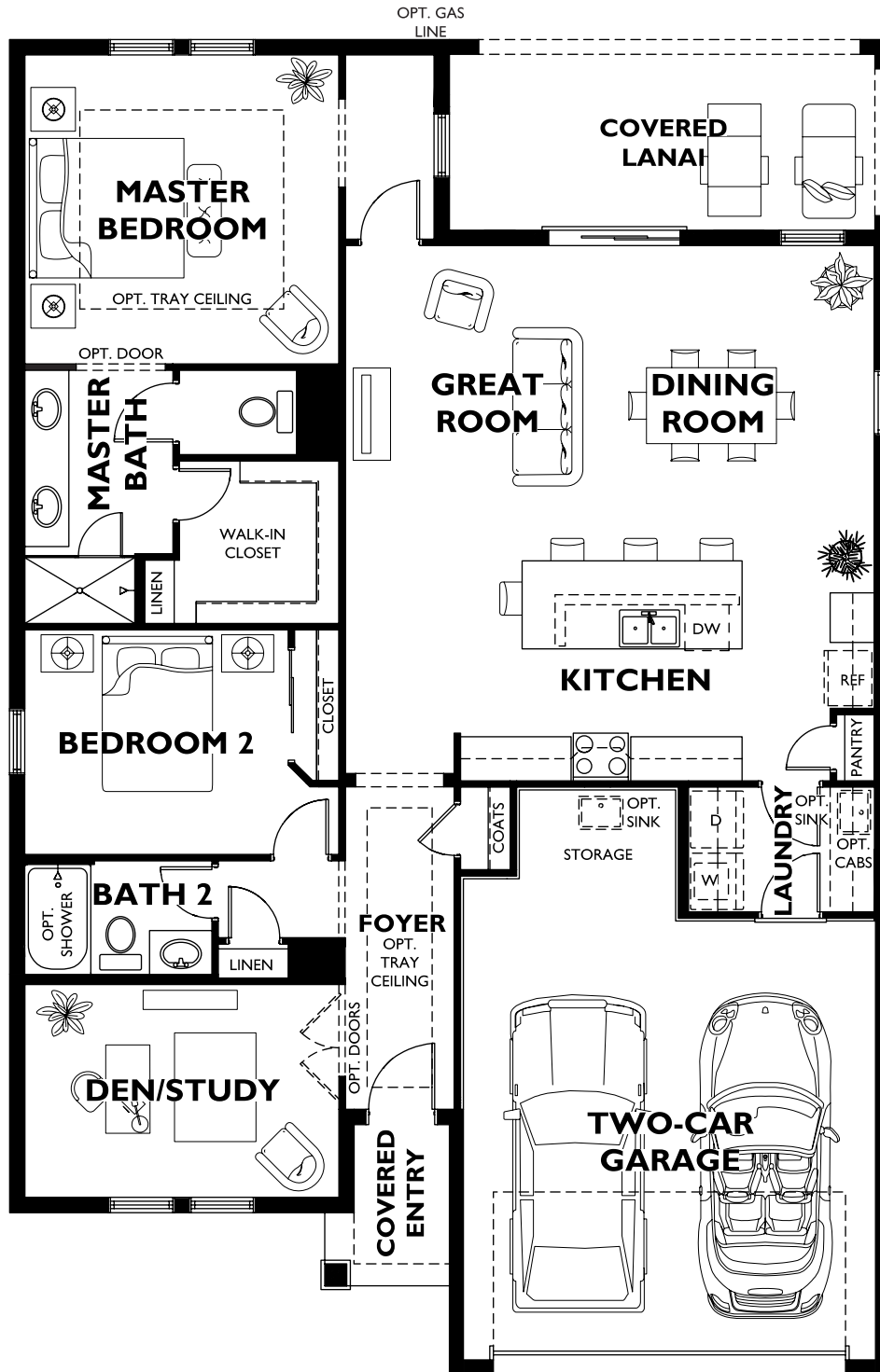
The following options are available but not selected : Hobby Space, Sunroom, Exterior Fireplace, Bedroom 3 w/ Bath 3, Rolling Wall at Dining, Tray Ceiling at Entry, Opt. Master Bath, Cabinets at Smart Space

Prices subject to change without notice. Please see your Community Representative with any questions. Sales: Shea Communities Marketing Company (NV #B.144675); Construction: SHALC GC, INC. (NV #NSCB0080574). Homes at Trilogy® are intended for occupancy by at least one person 55 years of age or older, with certain exceptions for younger persons as provided by law and the governing covenants, conditions and restrictions. This is not an offer of real estate for sale, or a solicitation of an offer to buy, to residents of any state or province in which registration and other legal requirements have not been fulfilled. Trademarks are property of their respective owners. Equal Housing Opportunity.

Elevation A



Floor 1



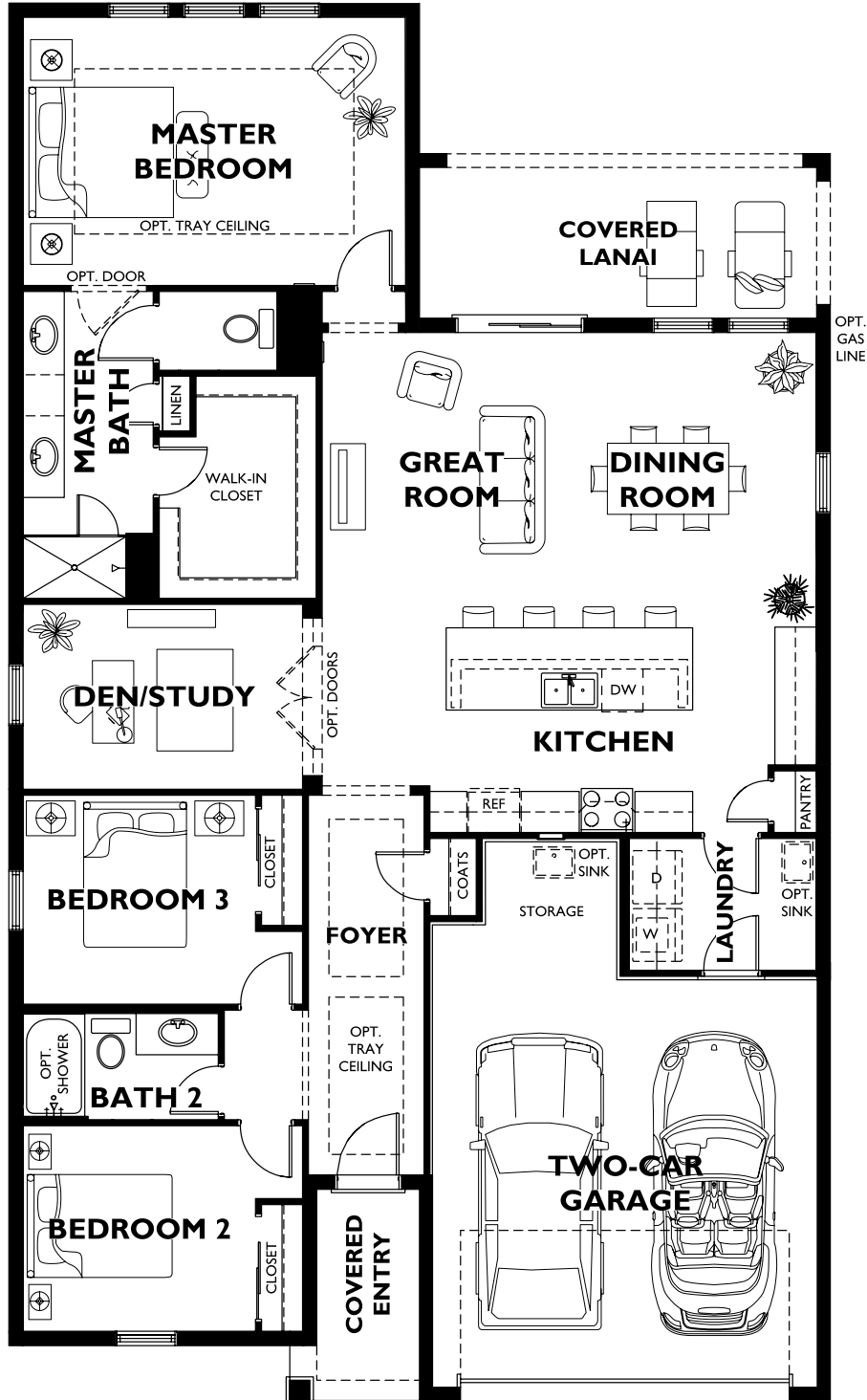
The following options are available but not selected : 2' Garage Extension, Bedroom 3, Rolling Wall at Great Room, Built-In Appliances at Kitchen, Extended Smart Space

Prices subject to change without notice. Please see your Community Representative with any questions. Sales: Shea Communities Marketing Company (NV #B.144675); Construction: SHALC GC, INC. (NV #NSCB0080574). Homes at Trilogy® are intended for occupancy by at least one person 55 years of age or older, with certain exceptions for younger persons as provided by law and the governing covenants, conditions and restrictions. This is not an offer of real estate for sale, or a solicitation of an offer to buy, to residents of any state or province in which registration and other legal requirements have not been fulfilled. Trademarks are property of their respective owners. Equal Housing Opportunity.

Elevation A



Floor 1



The following options are available but not selected : 2' Garage Extension, In-Law Suite, 9080 Sliding Glass Door at Great Room, Built-In Appliances at Kitchen, Extended Smart Space



Trilogy Orlando - Plan 4005 - Declare

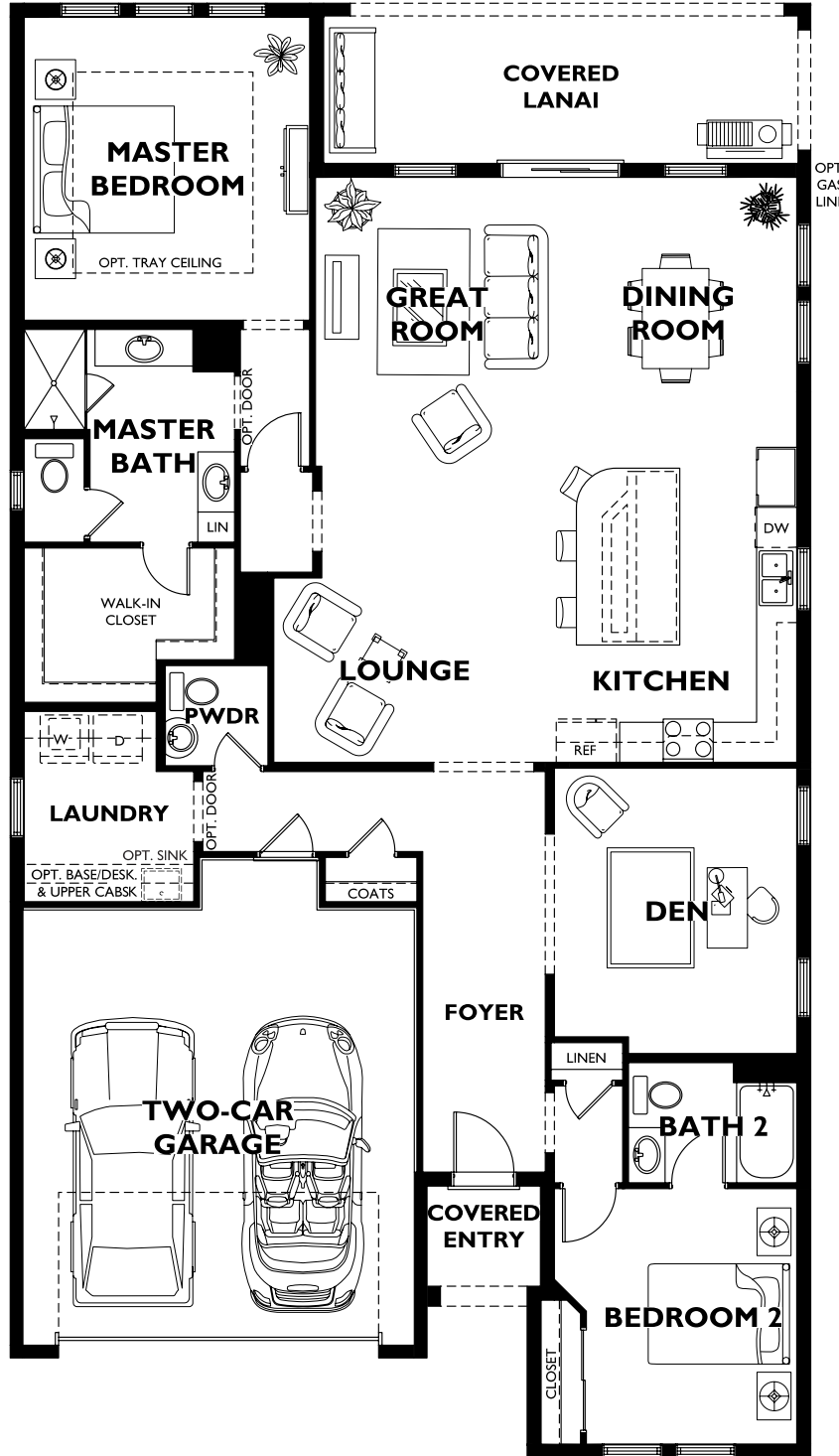
2-3 Bedrooms - 2.5 Bathrooms - 2 Car Garage - 2065 Sq. Ft.
100 Falling Acorn Ave, Groveland, FL 34736
(352) 240-7566

Elevation A



Prices subject to change without notice. Please see your Community Representative with any questions. Sales: Shea Communities Marketing Company (NV #B.144675); Construction: SHALC GC, INC. (NV #NSCB0080574). Homes at Trilogy® are intended for occupancy by at least one person 55 years of age or older, with certain exceptions for younger persons as provided by law and the governing covenants, conditions and restrictions. This is not an offer of real estate for sale, or a solicitation of an offer to buy, to residents of any state or province in which registration and other legal requirements have not been fulfilled. Trademarks are property of their respective owners. Equal Housing Opportunity.

Floor 1

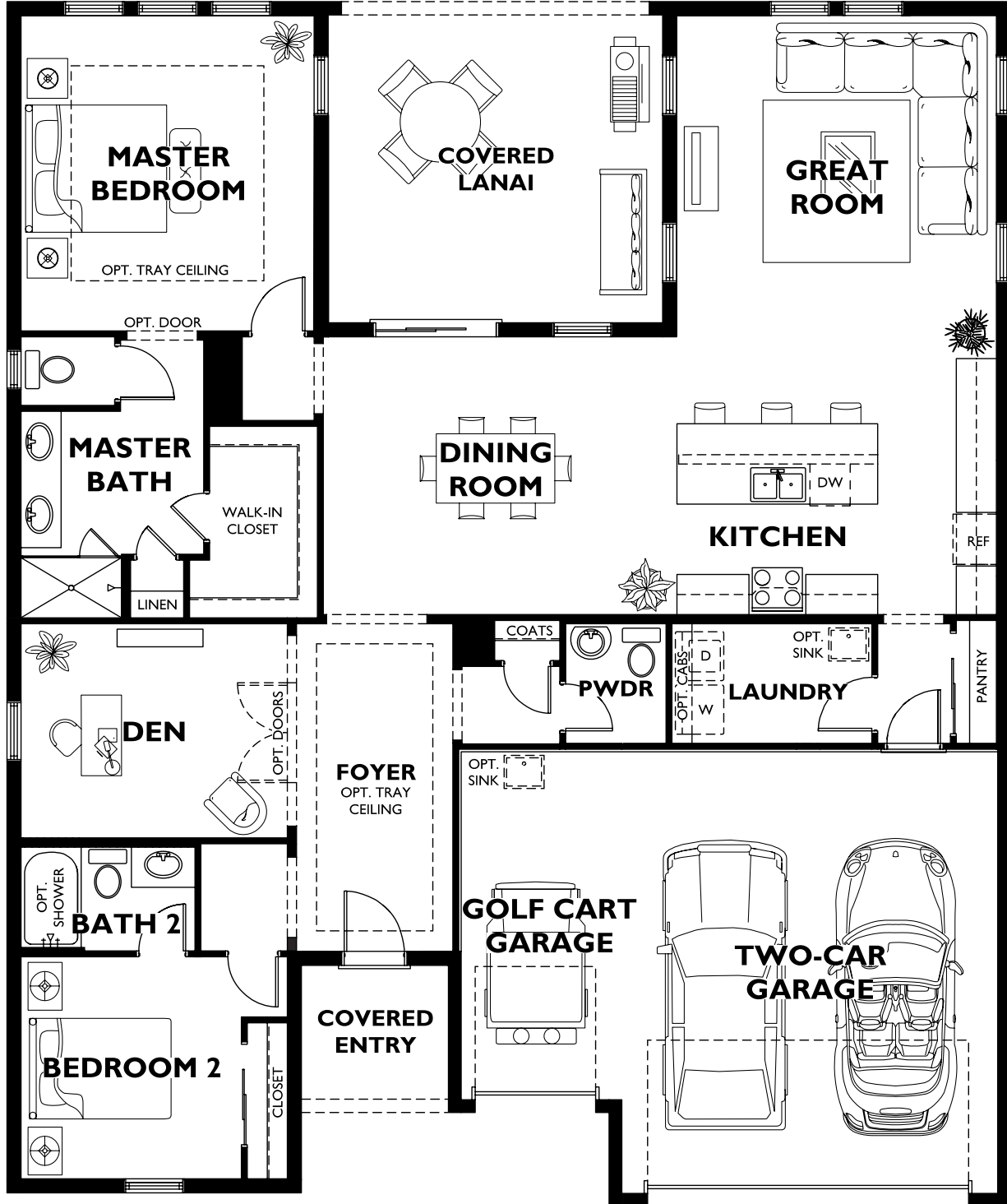


The following options are available but not selected : 2' Garage Extension, Bedroom 3, French Doors at Den, Rolling Wall at Great Room, Built-In Appliances at Kitchen

Elevation A



Floor 1

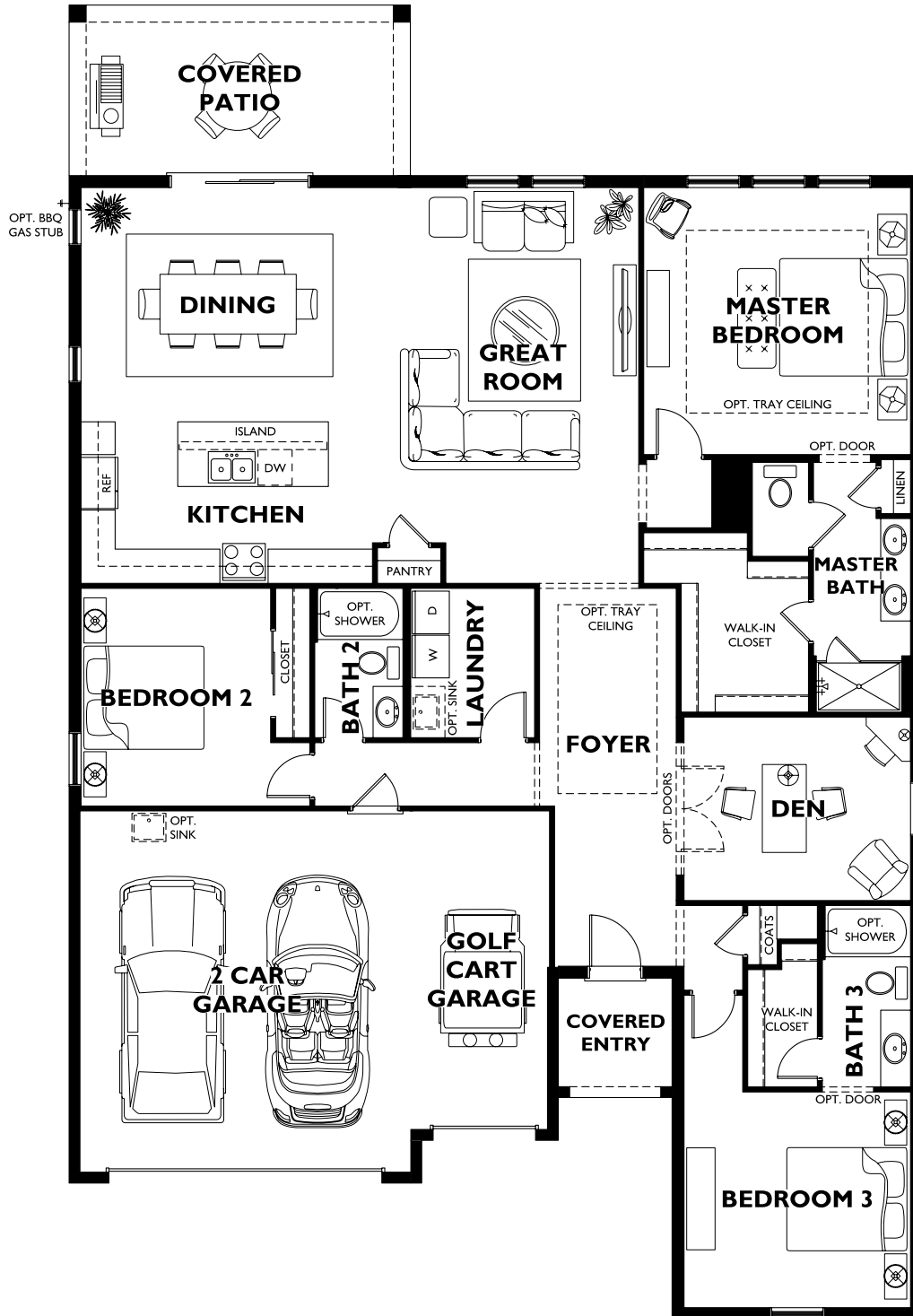


The following options are available but not selected : 2' Garage Extension, In-Law Suite, Bedroom 3, Rolling Wall at Dining, Built-In Appliances at Kitchen

Elevation A



Floor 1



The following options are available but not selected : 2' Garage Extension, Extended Lanai, Screened Lanai with Door, 12080 Sliding Glass Door at Dining, Built-In Appliances at Kitchen, 8080 Sliding Glass Door at Master Bedroom



Trilogy Orlando - Plan 5069 - Proclaim

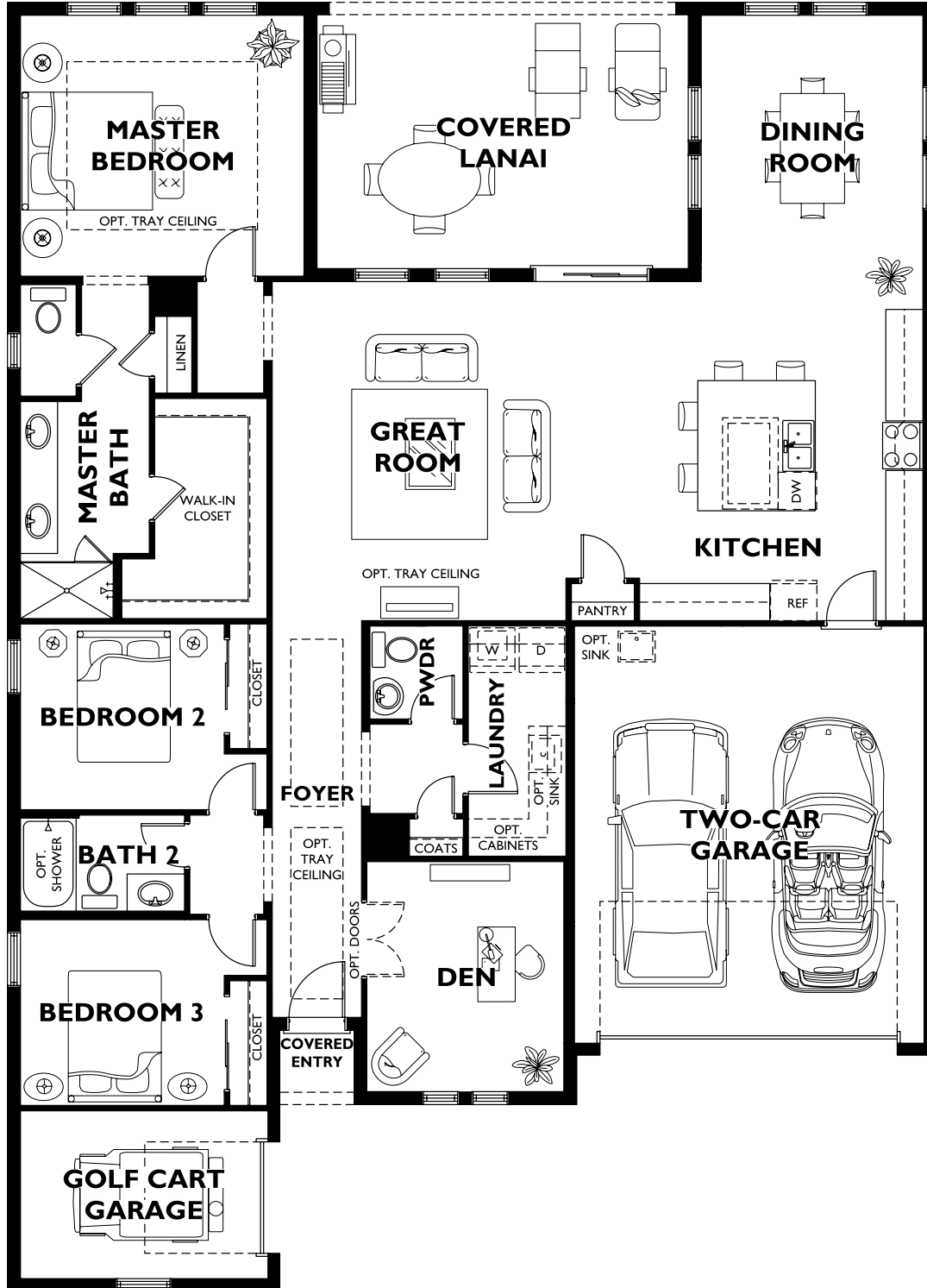
3 Bedrooms - 2.5-3.5 Bathrooms - 2-2.5 Car Garage - 2167 Sq. Ft.
100 Falling Acorn Ave, Groveland, FL 34736
(352) 240-7566

Elevation A



Prices subject to change without notice. Please see your Community Representative with any questions. Sales: Shea Communities Marketing Company (NV #B.144675); Construction: SHALC GC, INC. (NV #NSCB0080574). Homes at Trilogy® are intended for occupancy by at least one person 55 years of age or older, with certain exceptions for younger persons as provided by law and the governing covenants, conditions and restrictions. This is not an offer of real estate for sale, or a solicitation of an offer to buy, to residents of any state or province in which registration and other legal requirements have not been fulfilled. Trademarks are property of their respective owners. Equal Housing Opportunity.

Floor 1



The following options are available but not selected : In-Law Suite, Rolling Wall at Great Room, Built-In Appliances at Kitchen

Prices subject to change without notice. Please see your Community Representative with any questions. Sales: Shea Communities Marketing Company (NV #B.144675); Construction: SHALC GC, INC. (NV #NSCB0080574). Homes at Trilogy® are intended for occupancy by at least one person 55 years of age or older, with certain exceptions for younger persons as provided by law and the governing covenants, conditions and restrictions. This is not an offer of real estate for sale, or a solicitation of an offer to buy, to residents of any state or province in which registration and other legal requirements have not been fulfilled. Trademarks are property of their respective owners. Equal Housing Opportunity.