

khov.com/FSOrlando

Architectural Exterior B1-B2



Artist's Rendering

THE EMERIE

K. HOVNANIAN'S®
FOUR SEASONS
At Orlando
 An Active Lifestyle Community



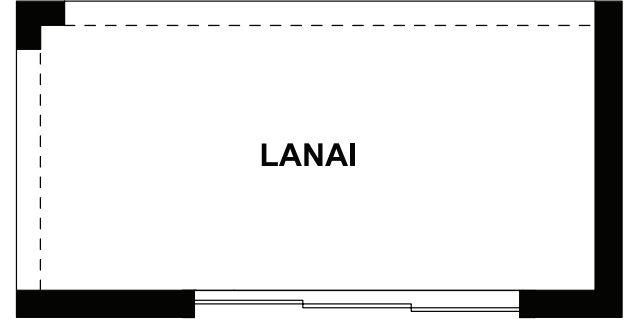
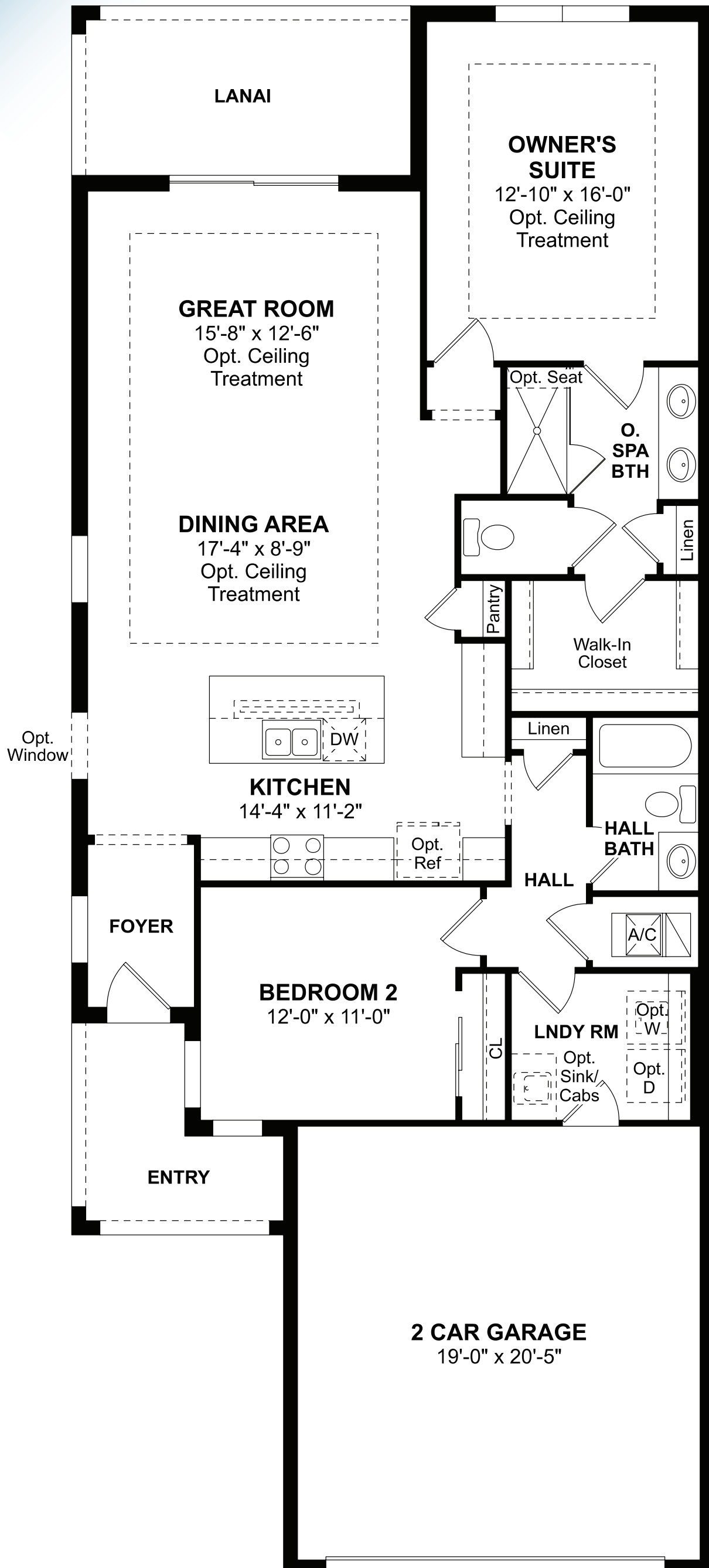
Artist's Rendering

Architectural Exterior A1-A2

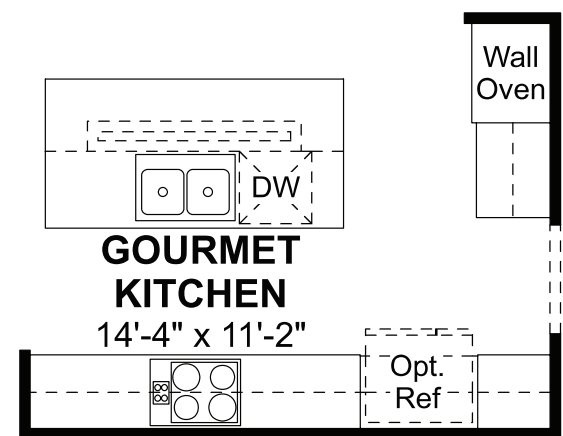
OFFERED BY
K. Hovnanian at Mystic Dunes, LLC

THE EMERIE

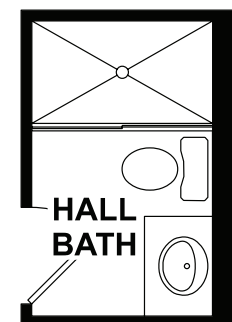
1,435 Sq. Ft. • 2 Bedrooms • 2 Baths
2 Car Garage



OPTIONAL 9' MULTI-SLIDE DOOR



OPTIONAL GOURMET KITCHEN



OPTIONAL HALL BATH SHOWER ILO TUB

All dimensions are approximate. Window configurations may vary based upon elevation chosen. Purchasers must review detailed architectural drawings available in the sales office to insure accuracy and understanding of home chosen. Please be advised that the square footage in the architectural drawings will be greater than that shown in this brochure because the architectural drawings include square footages for Common Elements which are adjacent to but not part of the Unit (aka home). All finished square footage calculations for this home were made based on plan dimensions only and may vary from the finished square footage of the home as built.