



GOLDEN OAK

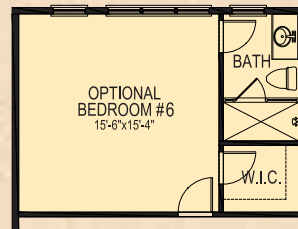
At WALT DISNEY World Resort



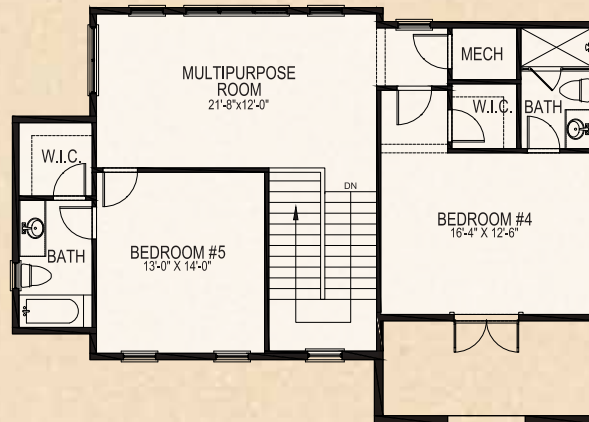
MONTEGO



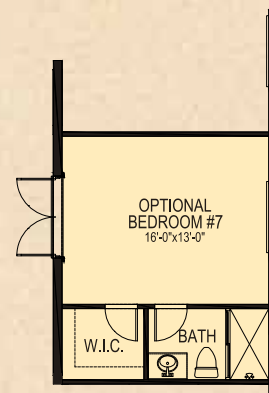
FIRST FLOOR



B - SECOND FLOOR OPTION



SECOND FLOOR



A - FIRST FLOOR OPTION



SECOND FLOOR LOCATION

First Floor A/C Living	2,725
Second Floor A/C Living	1,001
Guest Suite	447
Total A/C Living	4,173 Sq. Ft.
2 Car Garage	550
Rear Covered Porch	437
Covered Entry	51
Guest Suite Covered Porch	155
Total Square Feet	5,366 Sq. Ft.
A - First Floor Optional Bedroom #7	+324 Sq. Ft.
B - Second Floor Optional Bedroom #6	+359 Sq. Ft.



OPTION A & B LOCATION

MONTEGO

Designed to fit Marceline Lot 3*

ISSA Homes

*Plan may fit other homesites with minor or major modifications which must be approved by the Architectural Control Board.



MONTEGO

Alternate Dutch Elevation
ISSA Homes



MONTEGO

Alternate French Elevation
ISSA Homes



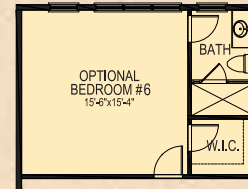
MONTEGO

Alternate Courtyard Option Elevation
ISSA Homes

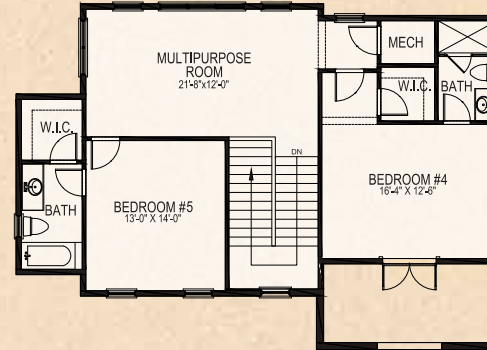


MONTEGO

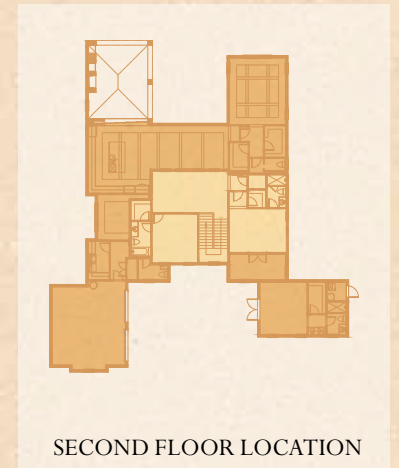
Courtyard Option - Designed to Fit Marceline Lot 17
ISSA Homes



SECOND FLOOR OPTION



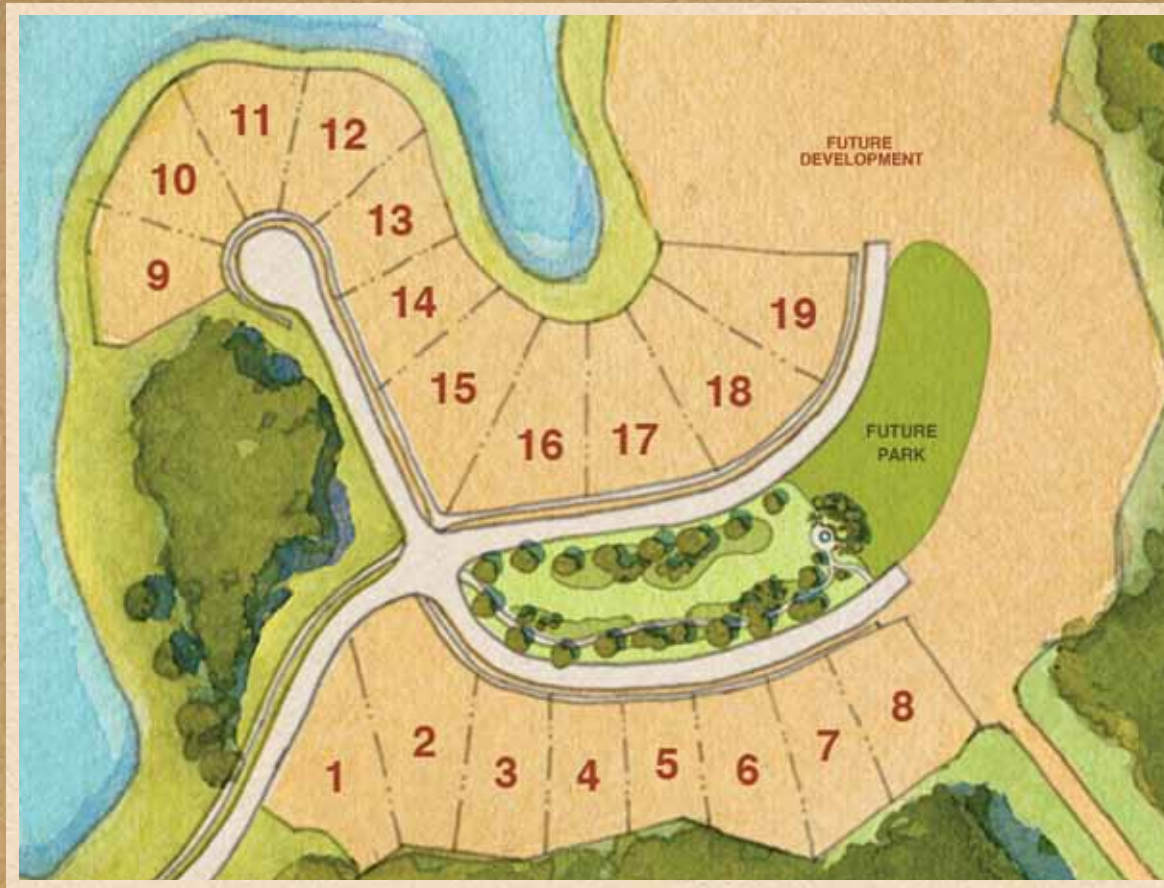
SECOND FLOOR



First Floor A/C Living	2,807
Second Floor A/C Living	1,001
Guest Suite	425
Total A/C Living	4,233 Sq. Ft.

2 Car Garage	555
Rear Covered Porch	437
Covered Entry	51
Total Square Feet	5,276 Sq. Ft.

Second Floor	
Optional Bedroom #6	+359 Sq. Ft.



❧ **GOLDEN OAK REALTY** ❧

10501 DREAM TREE BOULEVARD ■ GOLDEN OAK, FLORIDA 32836

407.939.5577 (MAIN) ■ 407.938.9999 (FAX)

DISNEYGOLDENOAK.COM



Illustrations are artist depictions only and may differ from completed improvements. Artist rendering may not reflect the actual details or landscaping of the finished home. Builder reserves the right to make changes to these plans, specifications, dimensions, and elevations without prior notice. Plans are presented as Concept plans only and will require additional design reviews as required by the Architectural Control Board (ACB). All plans must receive final approval by the ACB before being built. Dimensions are subject to change without notice. See a sales associate for complete and current information. Printed 9/2013.