



# GOLDEN OAK

At WALT DISNEY World Resort



DELL' ARTE



# DELL' ARTE

Alternate Spanish Revival Elevation  
CAHILL





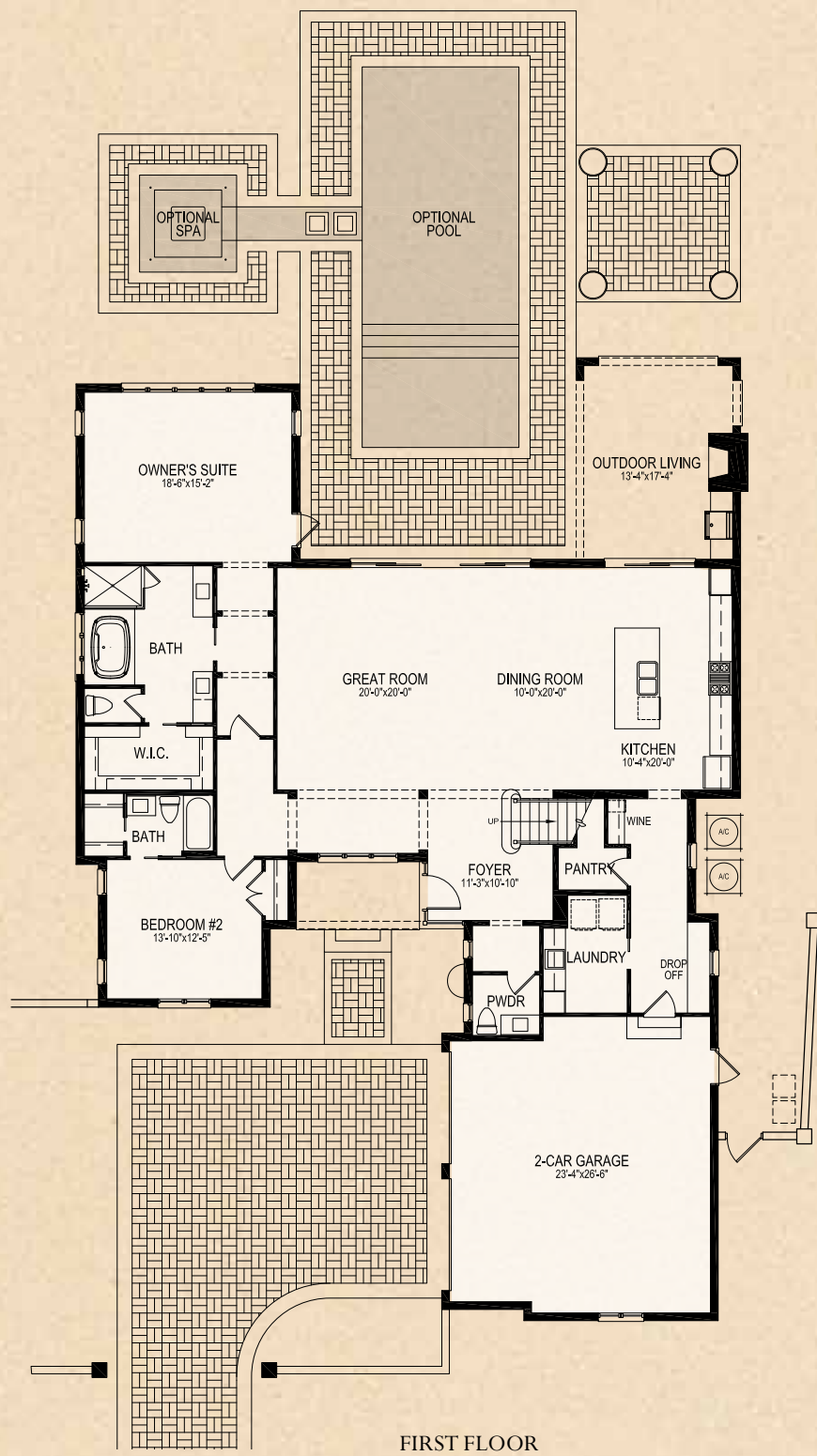
# DELL' ARTE

Alternate Italianate Elevation

CAHILL



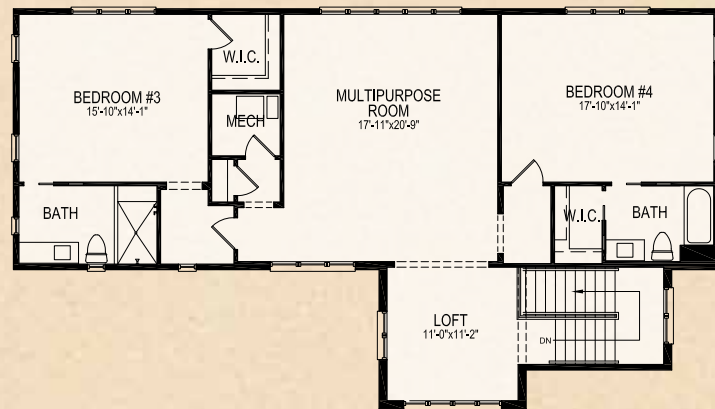




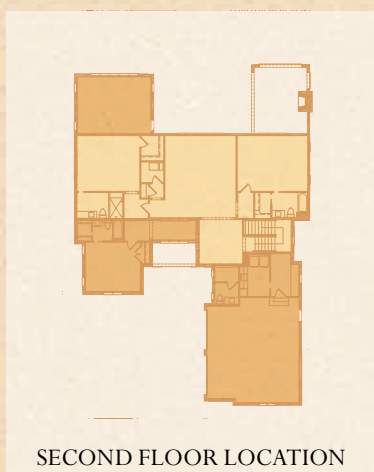
FIRST FLOOR



SECOND FLOOR OPTION

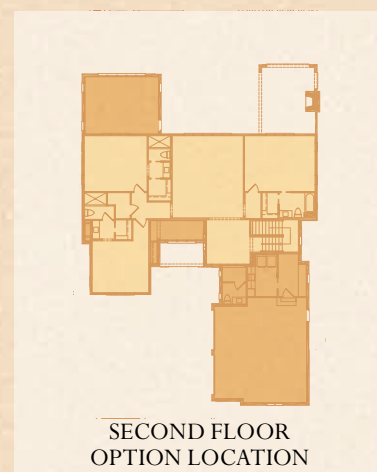


SECOND FLOOR



SECOND FLOOR LOCATION

|                                   |                      |
|-----------------------------------|----------------------|
| First Floor A/C Living            | 2,475                |
| Second Floor A/C Living           | 1,456                |
| <b>Total A/C Living</b>           | <b>3,931 Sq. Ft.</b> |
| 2 Car Garage                      | 642                  |
| Outdoor Living                    | 395                  |
| <b>Total Square Feet</b>          | <b>4,968 Sq. Ft.</b> |
| Second Floor<br>Bedroom #5 Option | +284 Sq. Ft.         |



SECOND FLOOR  
OPTION LOCATION

# DELL' ARTE

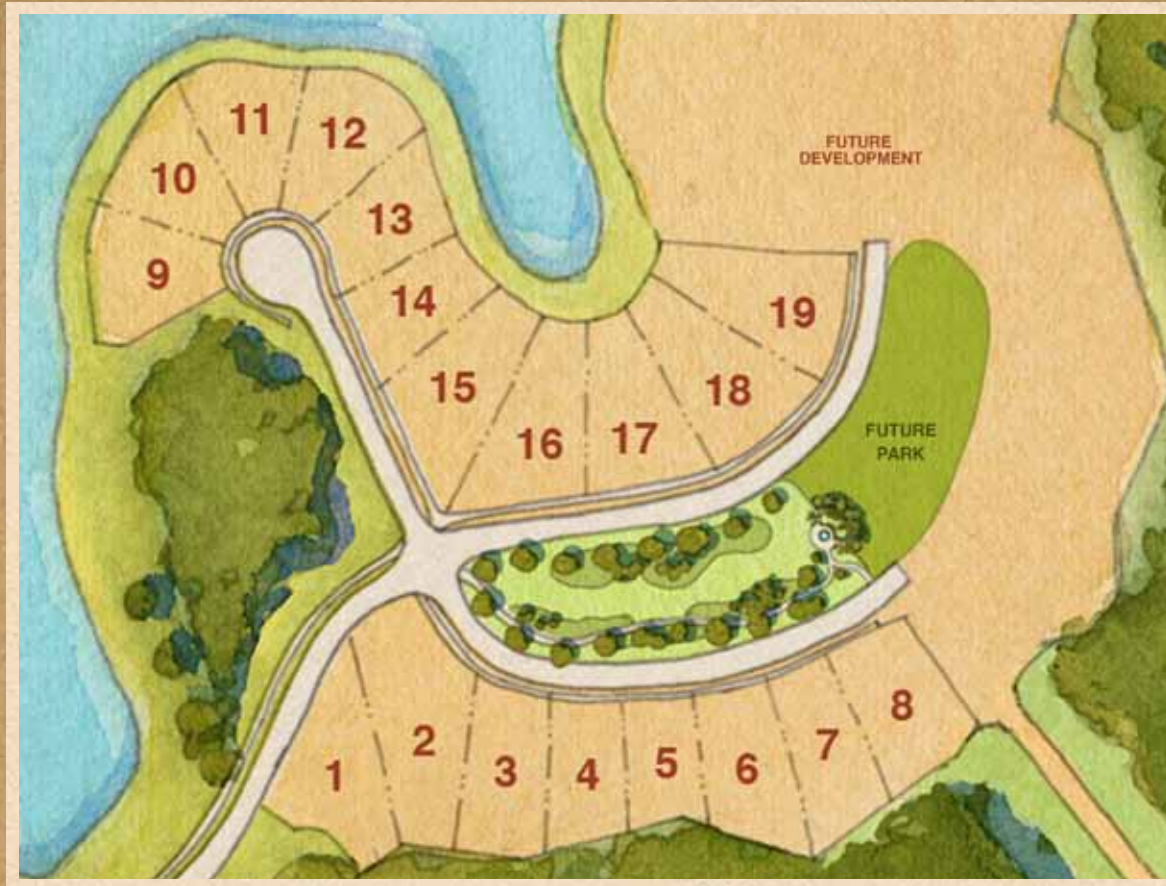
Designed to fit Marceline Lot 5\*

## CAHILL

*\*Plan may fit other homesites with minor or major modifications which must be approved by the Architectural Control Board.*







**GOLDEN OAK REALTY**

**10501 DREAM TREE BOULEVARD ■ GOLDEN OAK, FLORIDA 32836**

**407.939.5577 (MAIN) ■ 407.938.9999 (FAX)**

**DISNEYGOLDENOAK.COM**



**CAHILL**

Illustrations are artist depictions only and may differ from completed improvements. Artist rendering may not reflect the actual details or landscaping of the finished home. Builder reserves the right to make changes to these plans, specifications, dimensions, and elevations without prior notice. Plans are presented as Concept plans only and will require additional design reviews as required by the Architectural Control Board (ACB). All plans must receive final approval by the ACB before being built. Dimensions are subject to change without notice. See a sales associate for complete and current information. Printed 4/2013.