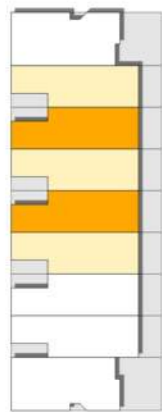


8 UNIT BUILDING



9 UNIT BUILDING



TOWNHOUSE B

4 BEDROOM - 4 1/2 BATH
SLEEPS 10

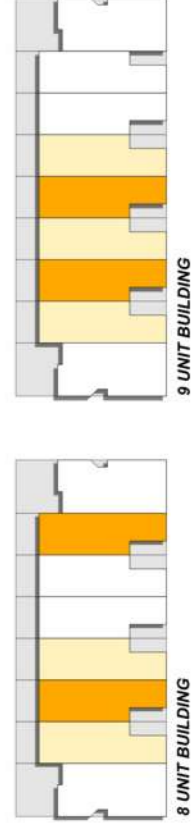
1ST FLOOR = 899 SF A/C
2ND FLOOR = 905 SF A/C
TOTAL = 1,804 SF A/C

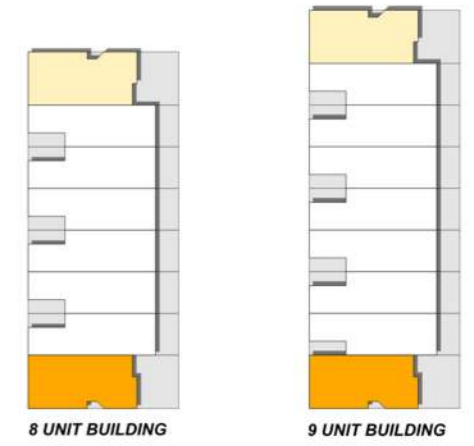


TOWNHOUSE B

4 BEDROOM - 4 1/2 BATH
SLEEPS 10

1ST FLOOR = 899 SF A/C
2ND FLOOR = 905 SF A/C
TOTAL = 1,804 SF A/C

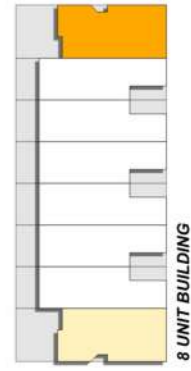




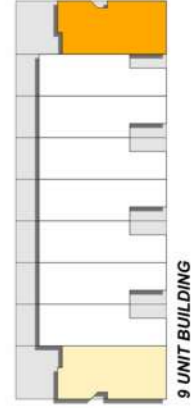
TOWNHOUSE C

5 BEDROOM - 6 BATH
SLEEPS 12

1ST FLOOR = 1,072 SF A/C
2ND FLOOR = 1,097 SF A/C
TOTAL = 2,169 SF A/C



8 UNIT BUILDING



9 UNIT BUILDING



TOWNHOUSE C

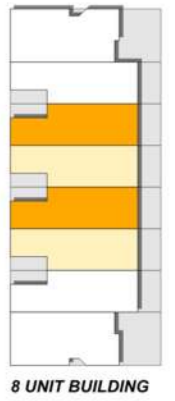
5 BEDROOM - 6 BATH

SLEEPS 12

1ST FLOOR = 1,072 SF A/C

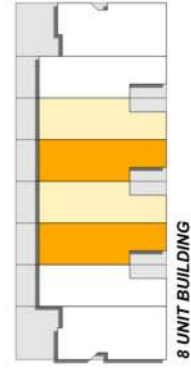
2ND FLOOR = 1,097 SF A/C

TOTAL = 2,169 SF A/C



TOWNHOUSE D
6 BEDROOM - 7 BATH
 SLEEPS 14

1ST FLOOR = 1,026 SF A/C
 2ND FLOOR = 902 SF A/C
 3RD FLOOR = 902 SF A/C
TOTAL = 2,830 SF A/C



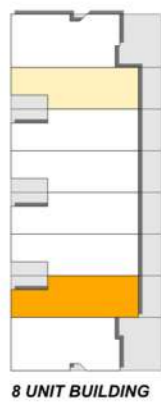
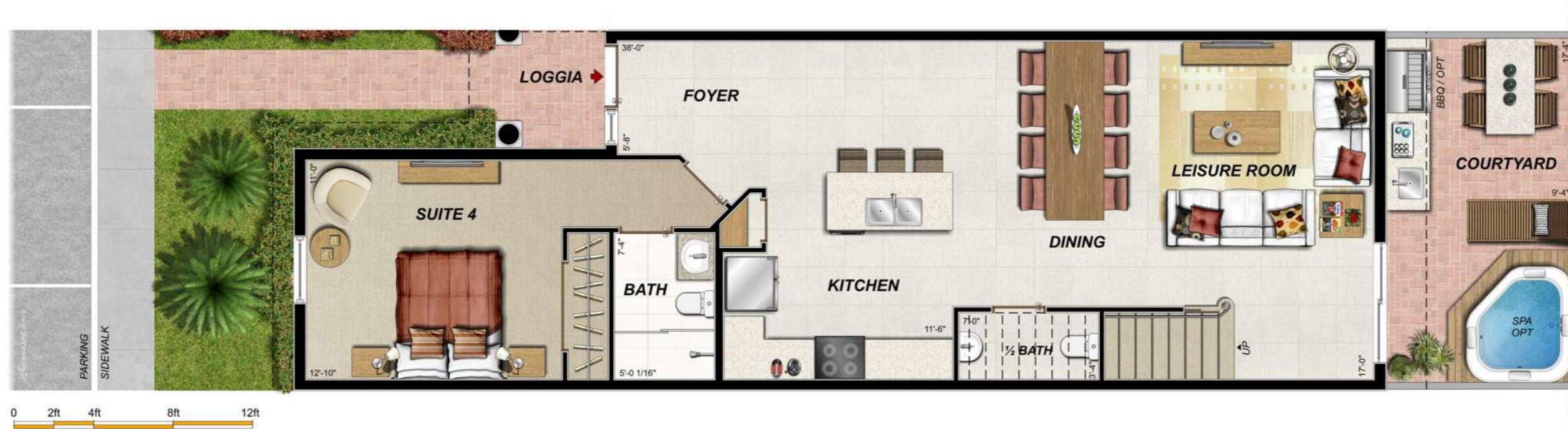
8 UNIT BUILDING



TOWNHOUSE D

6 BEDROOM - 7 BATH
SLEEPS 14

1ST FLOOR = 1,026 SF A/C
2ND FLOOR = 902 SF A/C
3RD FLOOR = 902 SF A/C
TOTAL = 2,830 SF A/C



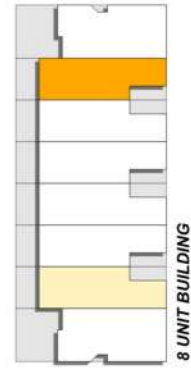
8 UNIT BUILDING



TOWNHOUSE B2

4 BEDROOM - 4 1/2 BATH
SLEEPS 10

1ST FLOOR = 926 SF A/C
2ND FLOOR = 931 SF A/C
TOTAL = 1,857 SF A/C



TOWNHOUSE B2

4 BEDROOM - 4 1/2 BATH
SLEEPS 10 - INSIDE UNIT

1ST FLOOR = 926 SF A/C
2ND FLOOR = 931 SF A/C
TOTAL = 1,857 SF A/C