

2681

THE BIMINI



E

2,681 Sq. Ft.

5 Bedroom

4.5 Bath

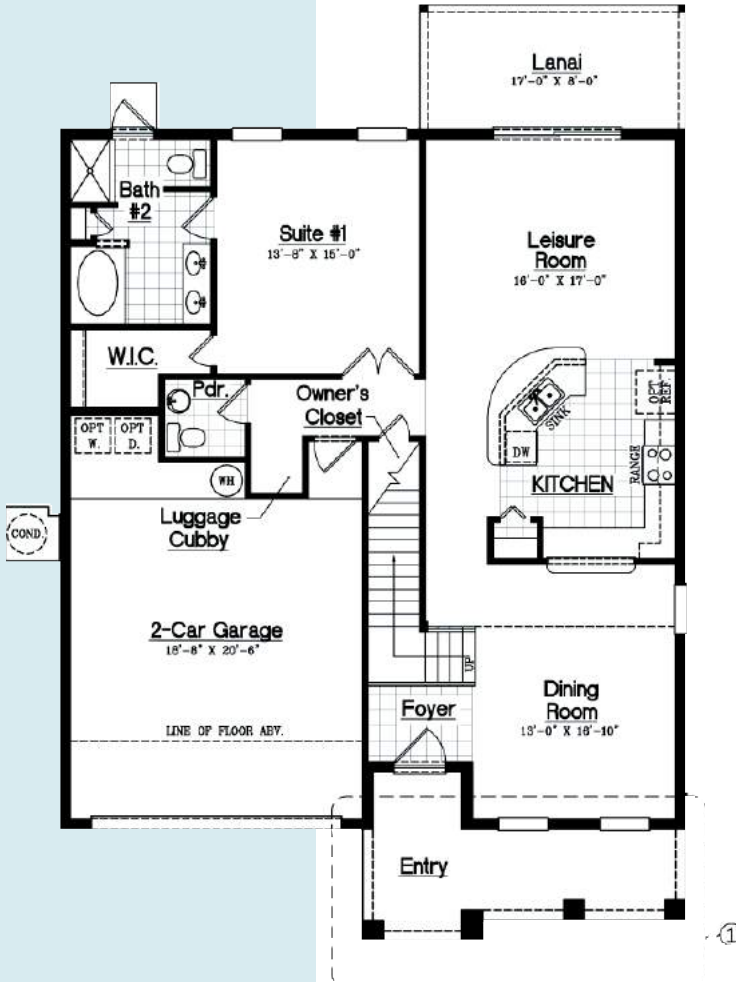
2-Car Garage



D

D·R·HORTON®
America's Builder

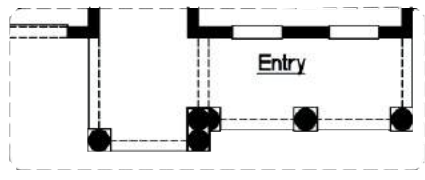
drhorton.com/orlando



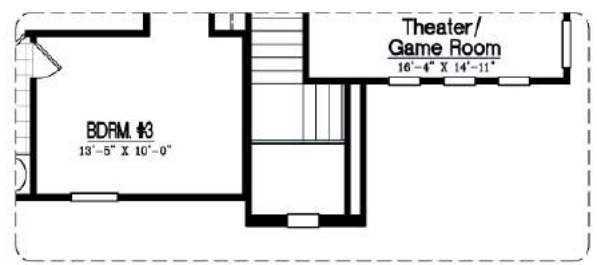
FIRST FLOOR PLAN



SECOND FLOOR PLAN



① ELEVATION "E"



② ELEVATION "E"

AREA CALCULATIONS

Living	2,681 sq. ft.
Garage	470 sq. ft.
Entry	152 sq. ft.
Lanai	136 sq. ft.
Total	3,439 sq. ft.



Floorplans and elevations are artist's renderings for illustration purposes only. Features, sizes and details are approximate and will vary from the homes as built. Square foot dimensions are approximate. Builder reserves the right to change and/or alter materials, specifications, features, dimensions, designs and price without prior notice or obligation. CBC1252212. 4/13/13